



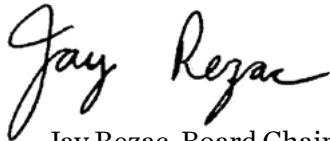
2018 ANNUAL REPORT

Building, Serving and Investing in Our Communities
A message from the Board Chair and Executive Director

The Caring Community Foundation celebrated the completion of its second full year on February 23, 2018. We are excited because community members have donated, invested, pledged and planned bequests for nearly \$1.2 Million for community assistance in this short time.

The Foundation serves as a savings account for our communities' futures. You help your community however you can now, but what if you could continue to help out long after you are gone? The Foundation makes it possible for you to do that. The Caring Community Foundation also started helping our communities right away, with our first grant cycle and our annual major fundraising event – Looking Forward, Giving Back.

This report focuses on how we are building, serving and investing in our communities. We will be busy in 2018 continuing the work of 2017 creating legacies, enriching local lives and building a stronger future. Please contact us, we would love to discuss how we can work together to meet your needs and the community needs you care about



Jay Rezac, Board Chair



Susie Kufahl, Executive Director



CARING COMMUNITY FOUNDATION



Board Members:

Jay Rezac, *Chair* (Onaga)

Jim Moore, *Treasurer*
(Westmoreland),

Carol Pollock (Havensville),
Rebecca Rookstool (Wamego)

Jay Kennedy (Frankfort)

Eugene Berges, *Vice Chair* (Onaga)

Robert Ladner, *Secretary* (Onaga)

Nick Novelty (St. Marys)



Staff:

Susie Kufahl, *Executive Director*

Julie Wren, *Assistant*



We Build

Funds: In 2017 we managed **14 funds** for communities, scholarships, education, sports and healthcare in Pottawatomie, Marshall, Nemaha and Jackson Counties.

Return on Investment for 2017: The stock market was very good this year. Endowments invested for the full year of 2017 **yielded 13.62 to 13.97%**. We work with the professional investment team at the Trust Company in Manhattan and appreciate their expertise in fund management.

Total donors: **68 individuals, couples and businesses contributed to the Foundation** this year.

Community service area: **Pottawatomie, Marshall, Nemaha and Jackson KS Counties**

Total assets by the end of 2016 were \$436,698, by the end of 2017 our **total assets** were **\$757,700**

We Serve

Community grants: **\$5000 awarded in 5 grants** to the City of Onaga for signage, Havensville and Frankfort community center improvements, Onaga Historical Society preservation efforts, and Frankfort USD 380 community playground improvements.

Looking Forward, Giving Back event was held in Onaga for the Community HealthCare System Diamond Anniversary and **raised nearly \$30,000** for the hospital's new infusion room.

We Invest

100 People Who Care! 100 people, couples, and businesses who love the small towns of Northeast Kansas and want to see the caring community lifestyle continue for future generations are joining forces to help secure a strong local future. This is a growing list of people committed to donating \$4000 by the end of 2020 to the community fund. This fund will exist into perpetuity, providing support for emerging community needs and fundamental operating costs of the Caring Community Foundation. For about **\$100 a month**, you could help change the future for us all. **100 People Who Care. For community. Forever. Are you one of us?**





CCF Annual Event held for a philanthropic purpose in one of our communities each year.

LOOKING FORWARD, GIVING BACK

2017 Event:

Diamond Anniversary Gala and
Auction for Community
HealthCare System



100 PEOPLE WHO CARE

People who love their rural communities all across Pottawatomie, Marshall, Nemaha and Jackson Counties are showing their commitment by joining 100 People Who Care! The 100 People Who Care movement is helping to build a community fund at the Caring Community Foundation to support community needs and fundamental operating costs for the Foundation. Donations are tax deductible and there is public recognition. These 100 are people who have a special place in their heart for their hometown community and want to protect local resources for future generations.

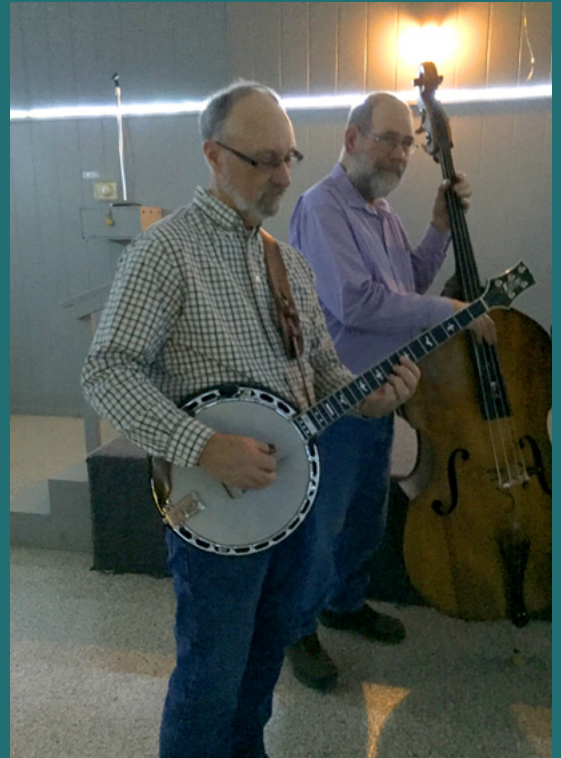
Through individual commitments of \$4000 each, 100 People Who Care is providing \$400,000 by the end of 2020 for our endowed permanent fund that will be put to work for our communities forever.

We are excited and grateful to report that though we are just getting started, we already have about a third of this founders' group identified. 100 People Who Care. For Community. Forever.... Are you one of us?

A Chocolate Affair for People Who Care

An appreciation event with live music, spirits, savory and sweet treats, fun and fellowship!





OUR STRATEGIC PRIORITIES

BUILD - *Grow Sustainability and Philanthropy*

- Identify 100 People Who Care
- Achieve widespread recognition of the CCF with people connected to our communities
- Add funds and giving channels

INVEST - *Empower the Future*

- Add endowments - a permanent source of funding for our communities
- Establish more planned giving - a lasting legacy for donors

SERVE - *Give Back to Our Communities*

- Provide community education, listening and leadership
- Keep efforts and resources local and independent
- Provide an annual grant cycle
- Host an annual Looking Forward, Giving Back philanthropic event in revolving communities
- Show appreciation for our donors
- Work with non-profits to help them grow

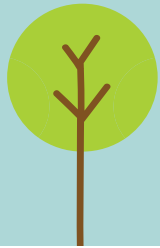


We make a living by what we get,

*but we make a life
by what we give.*

~ Winston Churchill





DONOR PERSPECTIVE

Jenni Moore

I have worked as an instructor with many nursing students and remember graduating from college myself with loans. I realize that I am now at a place where I can afford to “pay it forward” to help today’s nursing students. I feel strongly that well educated nurses provide the best care and a 4-year college education is expensive, so I wanted to offer a scholarship that offers support over the full 4-year time span. The Caring Community Foundation gives me tax deductible structure to offer these scholarships. The foundation also allows me to contribute into the fund now so that the scholarships will continue long term; the interest and the principal should make these available far into the future. I think others may find this a way to make sure their money goes to support the things they find important. I am considering beginning an additional fund for the



Rock Creek Valley Historical Society because I have seen how quickly the interest has multiplied the money I have already contributed into the fund for nursing scholarships!

John and Annette Cline

As long-time residents of the Onaga area, we have worked and made friends with many residents, both past and present, and we look back at what has made Onaga a place we wanted to live, raise our children and appreciate a more relaxed way of life. A large part of this picture is the willingness of people to lend a helping hand to anyone who needs help. We feel that by participating in the Caring Community Foundation, it provides an opportunity to do that, both now and in the future. The CCF acts as a savings account for the community as it benefits local charitable purposes. Onaga is our community and is one of the communities served by the CCF. As the residents of Onaga differ, so do the opportunities for participation. A one-time lump sum donation, monthly or once a year contribution, a memorial designation, or as a recipient of your will, are all options available to someone who wants to support their home town community in a capacity they can handle. CCF donations are also tax deductible. As with any new idea, people have questions



and wait for others they know and trust to make the first moves. At this point we think those first moves have been made and we would encourage others to analyze their financial plans and find a place for the Caring Community Foundation to fit in. While making this plan, think about what this area has given you during the past and how you can ensure it continues to be a place you want for yourself, your family and others to live and prosper in.

CCF FUNDS & DESCRIPTIONS

Community Fund: \$116,737

Offers flexibility to address the needs of the region and operational needs.

Donor Advised Funds: \$231,469

Support broad charitable purposes specified by the donor.

- Wayne Stallard Family Fund and Bruce Wayne Stallard Scholarship.

Scholarship Funds: \$223,568

- Auxiliary for Community Hospital District #1 Scholarship Fund
- Krouse Family Agricultural Scholarship Fund
- Jennifer K. Moore Nursing Scholarship Fund
- Walter Byers Scholarship Fund
- Westmoreland Scholarship Fund

Designated Funds: \$70,333

Benefit one or more named charities.

- Friends of USD 322
- Carol and Robert Williamson Fund for CHCS
- CHCS Infusion Room Fund

Acorn Funds: \$6,477

New funds intended to grow to at least \$5000 for Investment within a few years

- Onaga Golf Fund
- Onaga Football Alumni Fund

Foundation Net Assets: \$648,584

Agency Funds: \$107,768

Professional investment of expendable funds to support area non-profit organizations.

- Community HealthCare System Fund
- First Congregational Church of Onaga Fund

Total Net Assets & Agency Funds as of December 31, 2017

\$756,352



CCF DONOR CATEGORIES

2017 donors listed by category, excluding
pass-through project and agency funds

Legacy Society

Those who have made a planned gift to the CCF:

- Carol* and Robert Williamson

Cornerstone Society

Donors who have achieved a lifetime total of
\$100,000 in gifts to the CCF:

- Carol Hudler

- Deborah Stallard

100 People Who Care – Founders' Society

Donors who have paid/pledged \$4000 to our
unrestricted community fund by the end of 2020:

Anonymous, Pam and Bruce Bachman, Eugene
and Deborah Berges, Bob's Service, Lanny and
Nancy Bosse, Justin and Virginia F. Boswell,
Rheva Boswell, John and Annette Cline,
Farmers State Bank, Terry and Sally Force, John
and Regina Gronewoller, Milton and Dorothy
Henneberg, Jay and Maggi Kennedy, Joe and
Marybeth Kennedy, Tim and Cindy Kite, Jay
and Susie Kufahl, Rosalind and Rick Lewis,
Marten Dozing, James and Jennifer K. Moore,
Nicholas and Denise Novelty, Nina Oakes, Onaga
Pharmacy, Dan and Carol Pollock, Barbara Rezac,
Debra and Lance Rezac, Jay and Stacy Rezac, Deb
Stallard, Steve and Anne Suther, Dr. Marcus and
Meghan Weiser, Todd and Nancy Willert

**denotes deceased*

2017 League of Extraordinary Givers

Annual givers recognized at these levels, excluding pass-through project and agency funds:



Initiator \$25 – 499

Ken Underwood, Jami and Daniel Berges, Pat and Marilyn McCourt, Onaga Jaycees



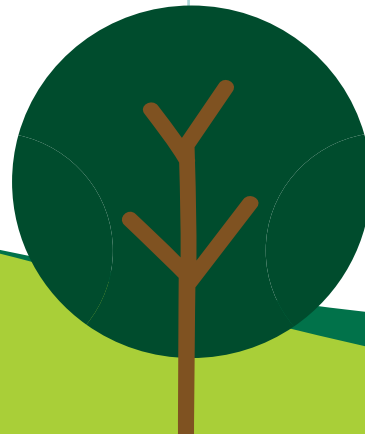
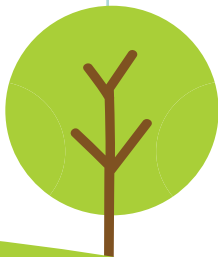
Friend \$500 – 999

James Meinhardt, Dr. Tom Walsh, Fred and Dena Marten



Champion \$1000 – 4999

Anonymous, Pam and Bruce Bachman, Eugene and Deborah Berges, Bob's Service, Lanny and Nancy Bosse, Justin and Virginia F. Boswell, Rheva Boswell, John and Annette Cline, Farmers State Bank, John and Regina Gronewoller, Milton and Dorothy Henneberg, Jay and Maggi Kennedy, Joe and Marybeth Kennedy, Tim and Cindy Kite, Jay and Susie Kufahl, Marten Dozing, James and Jennifer K. Moore, Nicholas and Denise Novelly, Nina Oakes, Onaga Pharmacy, Dan and Carol Pollock, Barbara Rezac, Debra and Lance Rezac, Jay and Stacy Rezac, Deb Stallard, Steve and Anne Suther, Dr. Marcus and Meghan Weiser





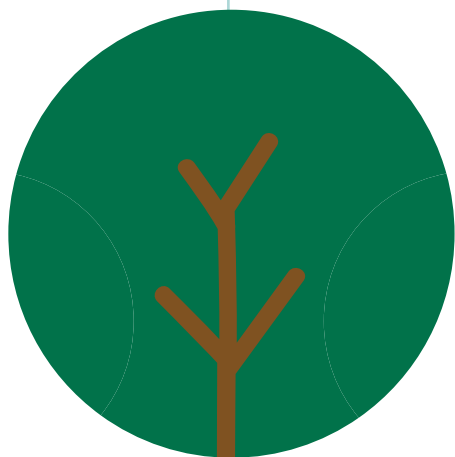
Steward \$5000 – 9999

James and Jennifer K. Moore



Benefactor \$10,000 +

Don, Dale and Dean Krouse, Auxiliary for
Community Hospital District #1, Walter
Byers Trust





STATEMENT OF NET ASSETS

(unaudited)

DEC. 31, 15

DEC. 31, 16

DEC. 31, 17

Assets

Cash & Investments

Cash on hand

5,000

Farmers State Bank

92,717

12,639

78,399

The Trust Company

-

424,059

607,301

Total Checking/Savings

92,717

436,698

690,700

Pledges Receivable

-

-

67,000

TOTAL ASSETS

\$ 92,717

\$ 436,698

\$ 757,700

Liabilities & Net Assets

Liabilities

Accounts Payable

713

1,348

Agency Funds

42,686

32,581

107,768

Total Liabilities

42,686

33,294

109,116

Prior Year Net Assets

-

50,031

403,404

Current Year Change

50,031

353,373

245,180

Net Assets

50,031

403,404

648,584

TOTAL LIABILITIES & NET ASSETS

\$ 92,717

\$ 436,698

\$ 757,700

Thank You



We are grateful for the generosity, vision and optimism of our communities. Together, we are growing a community of givers. We are excited to continue to build, and honored to continue to serve, our communities!

The Board of Directors and Staff of the
Caring Community Foundation

We invite you to contact us:

Susie Kufahl, Executive Director
Caring Community Foundation

P.O. Box 54, 307 Leonard St. Onaga, Kansas 66521

785-380- 9014

skufahl@ccfks.org

www.ccfks.org

